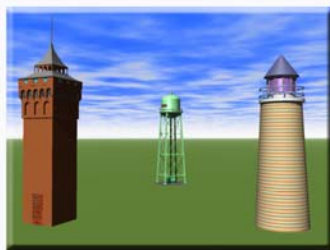


Historical Photos

NAME _____

On a trip to a city surrounded by many waterways, a series of photographs of some historical landmarks (a lighthouse, a water tower, and a steeple) was taken from the deck of a cruising ferryboat. Unfortunately, the resulting pictures were dropped and got mixed up. Can you find the order in which the pictures were taken? The map below shows the waterway region, and A-F are the six pictures.

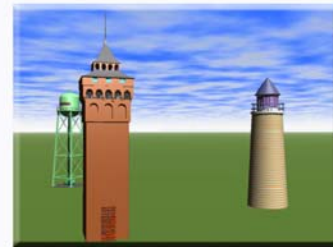
Order of Pictures: _____



A



B



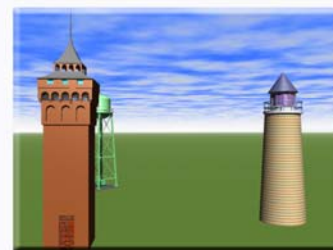
C



D



E



F